

# UNIGUARD 8

Probably the smallest duct smoke detector in the world!



# UNIGUARD

Calectro started with duct smoke detectors back in 1978, with a two tube system. This became a very important product for our company. We have always tried to be innovative, to listen to what our customer wants and to lead the development in our market segment. In 1994, we therefore developed our first Uniguard® one-tube-solution. Designed for installation in ventilation ducts, it was the first smoke detector in the world that used only one sampling tube. We are very proud of how revolutionary our product was then and still is today. But, time stands still for no one. We continue to lead the development, creating new and innovative solutions for both users and installation engineers.

We are now proud to introduce the latest version - **Calectro Uniguard® UG8**



### **Easy & fast installation** - *Because your time is valuable*

The new Uniguard 8 is designed to reduce installation time to a minimum. With just one sampling tube, containing both inlet and outlet airflow, you only need to drill one hole into the duct. Our mounting unit, easy access covers and spring-loaded power terminals take away all the hassle from the installation process, which can now be done in a few minutes.



### **Innovative Sampling Tube** - *Safer and Easier*

The 195 mm/8 inch "one size fits all" PST195 air sampling tube is certified for use with any size of duct where there is a laminar airflow\*.



### **360 degrees mounting possibilities** - *You don't need the hassle*

For a simpler installation, the Uniguard 8 rotates a full 360 degrees, while keeping the air sampling tube as well as the mounting device fixed in the correct airflow direction.



### **Carbon footprint** - *Reduced by over 50%*

Compared to our previous models, we have reduced the weight and the amount of plastic used by half. The reduction in size means that we can get more than twice as many on a pallet. This also results in reduced freight costs, storage space etc.



### **Made in Sweden** - *Because quality and safety matters*

Calectro's products have been designed and produced in Sweden for over 50 years. This contributes greatly to the high quality of the products, shorter transports and fast production.

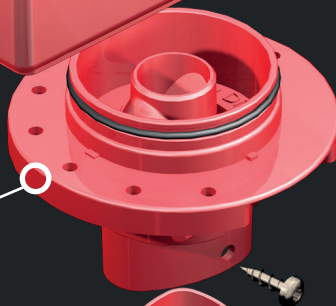
\*Disclaimer – Always make sure that you have installed the duct smoke detector in the correct place by performing a test with artificial smoke in the duct. In some places you might have to use an aluminium tube that penetrates the whole duct or change the placement of the UG8 duct smoke detector. Please see instruction manual for more information.

Easy snap on lids. No tools needed.



IP65 housing for tough environments.

Housing with 360 degree rotation possibility for easy installation. Patent pending.



PST195 Sampling Tube. For maximum airflow and a faster detection.



## Installing the UG8

### As easy as 1 - 2 - 3

1. Install the tube to the duct using the mounting device. Observe the airflow direction.
2. Attach the Uniguard 8 to the mounting device in the preferred direction and secure it to the duct.
3. Connect the wires to the terminals and snap the lid shut. No tools needed.



# UG8 Series for all your needs

Explore our wide range of UG8 duct smoke detectors. All UG8-E models are VdS/EN54-27 approved, have a built-in control unit and are available with 24V or 230V supply. We also offer two UL-certified models, UG8-U, that come with 24V or 120V supply.

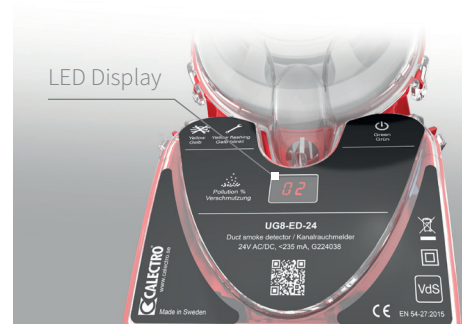
## Duct smoke detector UG8-E

- VdS/EN54-27 approved
- IP65 Dust and water resistant
- Sampling tube included in the box
- Available with 24V or 230V



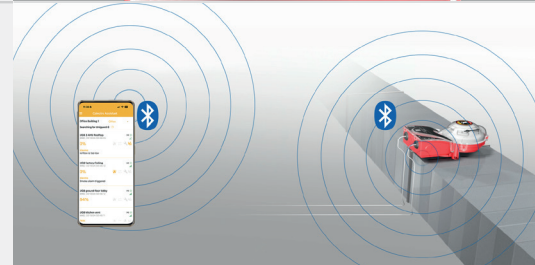
## Duct smoke detector UG8-ED

- Display
- Modbus RTU
- VdS/EN54-27 approved
- IP65 Dust and water resistant
- Sampling tube included in the box



## Duct smoke detector UG8-EB

- Bluetooth for easy reading of alarm and contamination status
- Modbus RTU
- VdS/EN54-27 approved
- IP65 Dust and water resistant
- Sampling tube included in the box



Free app available on: Download on the App Store GET IT ON Google Play

## Duct smoke detector UG8-U

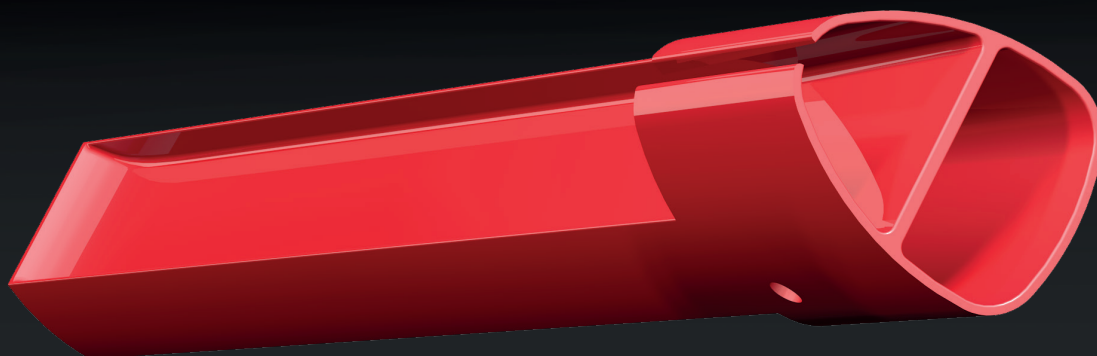
- UL-Certified
- IP65 Dust and water resistant
- Sampling tube included in the box
- Available with 24V or 120V



## Duct smoke detector UG8-O

- For external control unit ABAV-S3
- IP65 Dust and water resistant
- Sampling tube included in the box
- Power supply via the control unit





# Innovative new **Sampling Tube**

Meet **PST195**! Calectro's new sampling tube for use in ventilation ducts together with Uniguard 8. PST195 can be used for installations regardless of duct dimensions.

## **One tube for all ventilation ducts**

The PST195 sampling tube provides effective collection of flue gases and is tested and certified according to both European standards (VdS/EN54-27) and American standards (UL/268A). A compact and effective tube for both small and large ventilation ducts.

## **Faster installation**

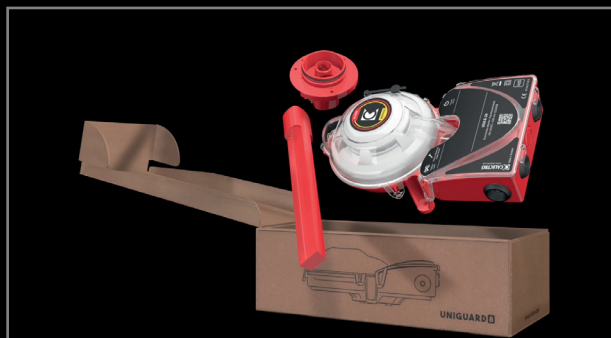
The new sampling tube does not need to be cut and fits all duct dimensions, making the installation of Uniguard 8 fast and smooth. For duct dimensions below  $\varnothing$  200 mm, a mounting bracket is required.

## **Reduces your costs**

PST195 reduces both logistics costs and the need for warehouse capacity. The tube is very light, weighing only 21 grams, which is a great advantage during both transport and installation.

## **Included in the box**

The PST195 sampling tube is included in the package of all our UG8 models.



# Welcome to **Calectro**

For 55 years we have been at the disposal of our customers, both in terms of our high quality, in-house developed products and our many years of industry experience.

We love working close to our customers, and we develop products that make the job of the installers less of a challenge. Since we sell ready-made units as well as OEM solutions, we can always find a solution to your specific needs through our wide range of products or special product designs.

**We always strive to deliver exactly what you ask of us.**



### Personal service

From 8 to 4 CET every weekday you will get a speedy reply to your questions from our customer support.



### Customised solutions

We customise and develop products that solve your technological needs.



### 5-year warranty

The warranty includes replacement delivery for Calectro products that are not working due to fabrication or material failure.

---

### Contact:

Sales and Support: +46 31-69 53 01

Switchboard: +46 31-69 53 00

### Postal address:

Calectro AB  
Box 9097  
400 92 Gothenburg  
Sweden

### Delivery address:

Calectro AB  
Askims Verkstadsväg 13  
436 34 Askim  
Sweden

[www.calectro.com](http://www.calectro.com)